



## C8 COIL FEEDING SHELL SYSTEM

SLAC coil feeding shell system is built on Minster or Bruderer presses. It can run at high speed stably and is easy to maintain. The feed rolls are dual servo driven or mechanically driven, which will not cause any damage to the surface of the coil when the shell system is fed steadily at high speed. The shell tooling has an air pressure forming structure so that the shell specs remain constant. The tooling parts have a long service life and are easily replaced. The shells come out along an air drain into the Curler. The air drain structure makes shells go into the Curler at high speed with good stability. The Curler is usually a vertical type and each Curler is driven by one motor separately, which makes it convenient to maintain and adjust. The curler section is compact and occupies small floor space.

SLAC can design customized coil feeding shell systems and upgrade the system design to customer's needs, with the best and most economic proposal. The system stability & reliability will not be affected.



**SUZHOU SLAC PRECISION EQUIPMENT CO.,LTD**

No.1028,Sunwu Road,Xukou Town,Wuzhong District,Suzhou,Jiangsu Province,China

Tel: 0086-512-66930111

Fax: 0086-512-66248543

E-mail: [slac@slac.com.cn](mailto:slac@slac.com.cn)

Http: [www.slac.com.cn](http://www.slac.com.cn)

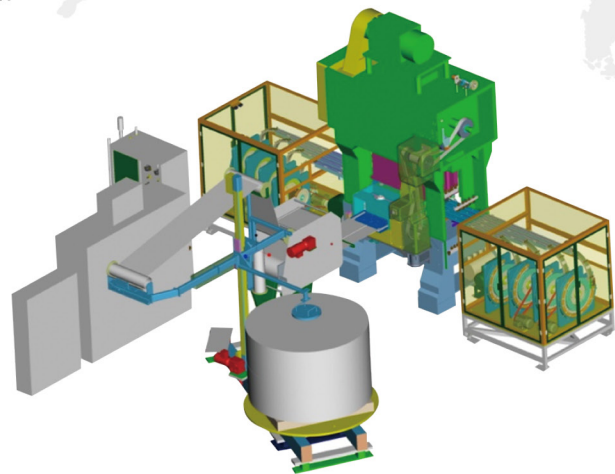


## Main Features

- ◆ Dual mechanical or servo wheel type drive feeding system
- ◆ Air drain conveyor system
- ◆ Independent gas circuit control
- ◆ AB or SIEMENS brand electronic control system and can be customized
- ◆ Tooling parts protected by sensors
- ◆ Speedy roller feeding system

## Specifications

- ◆ Press type: Minster or Bruderer Press
- ◆ Shell size:113-209
- ◆ Output:2-8out
- ◆ Capacity: 1200~4800spm
- ◆ No. ofCurlers: Depending on the output
- ◆ Feeding style: Mechanical or servo drive
- ◆ Speed:600 strokes per min
- ◆ Size:7 × 6.5 × 4m\*
- ◆ Weight: Approx. 22 tons (2-8 out)
- ◆ Compressed air pressure:6Nm<sup>3</sup>/min@100psi
- ◆ Power:380-460V,50/60Hz,3 phase(customized)
- ◆ Electronic control system: AB CompactLogix or SIEMENS S7300 PLC control



## SUZHOU SLAC PRECISION EQUIPMENT CO.,LTD

No.1028,Sunwu Road,Xukou Town,Wuzhong District,Suzhou,Jiangsu Province,China

Tel: 0086-512-66930111

Fax: 0086-512-66248543

E-mail: slac@slac.com.cn

Http: www.slac.com.cn