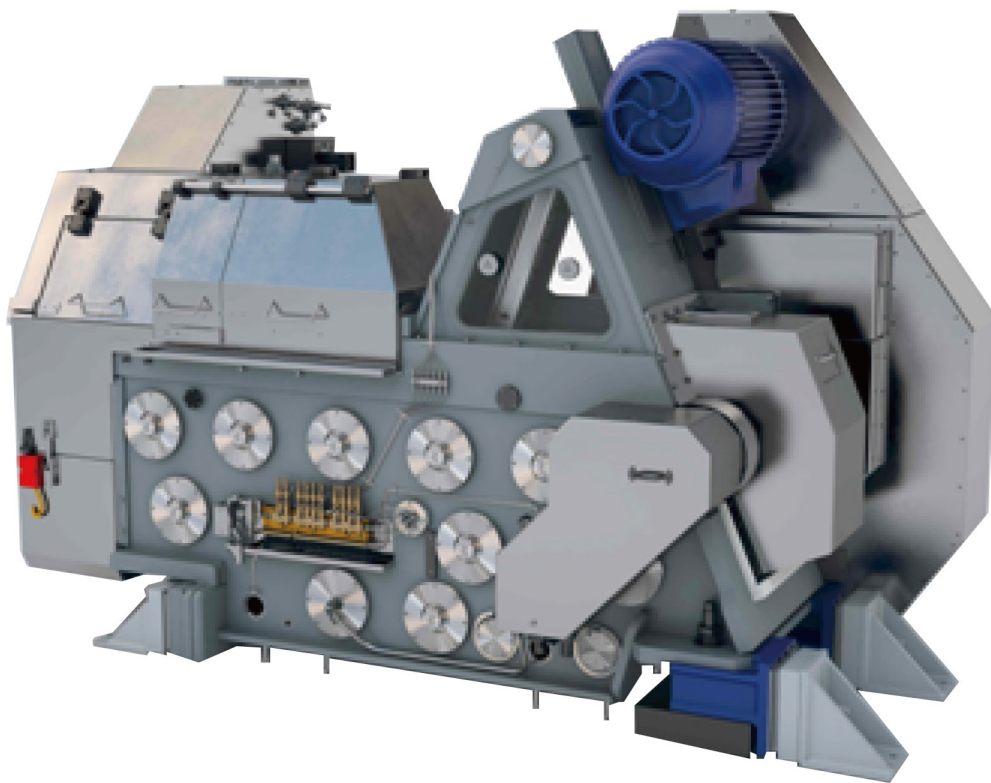




OKL BODYMAKER

The OKL BODYMAKER is designed to provide a stable, reliable continuous production of two-piece DWI can-bodies. Its speed while dependent on the can dimensions is designed to achieve 315CPM using the 24" stroke which covers can size from 202 to 300 with a Maximum Can volume of 500 ml.



SUZHOU SLAC PRECISION EQUIPMENT CO.,LTD

No.1028,Sunwu Road,Xukou Town,Wuzhong District,Suzhou,Jiangsu Province,China

Tel: 0086-512-66930111

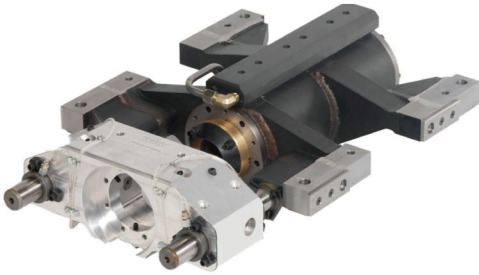
Fax: 0086-512-66248543

E-mail: slac@slac.com.cn

Http: www.slac.com.cn

Main Features

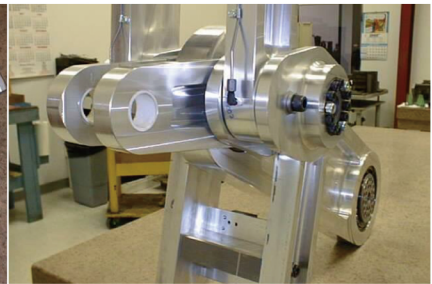
- ◆ **Linear Guidance System:** Our patented LGS has full contact composite bearings that eliminate the need for hydrostatic pump station related support. There are no fillers or orifices to replace or clean. The removable bearing cartridges allow for quick diameter changes – no need for re-alignment and can easily be changed in 1–2 hours.
- ◆ **Redraw Air Bag Assembly:** Low cost replacement for redraw Air–Cylinder. Air bag can be replaced without removing the ram guidance. Elimination of lubrication lines reduces tramp oil. No need for cooling water. Does not continually consume air.
- ◆ **Aluminum Parallel Motion Assembly:** Our direct replacement easy to install APMA are 50% lighter and stronger than standard steel. This allows for increased speeds with less vibration and provides reduced downtime for Rod or Link changes.
- ◆ **Composite Redraw Carriage Bushings:** Extends life of leader pins – the coolant inlets into the drilled leader pins eliminates oil requirements.



Linear Guidance System

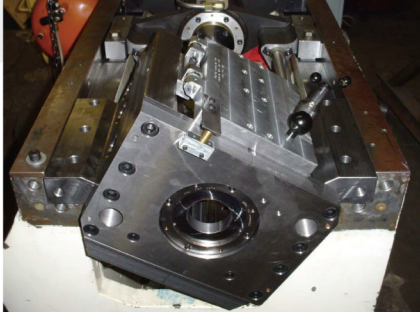


Redraw Air Bag Assembly

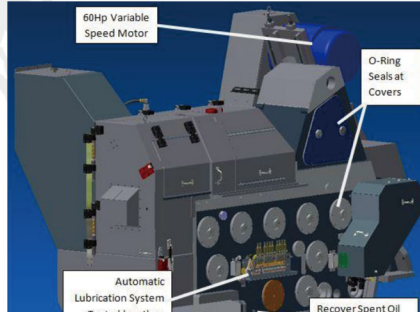


Aluminum Parallel Motion Assembly

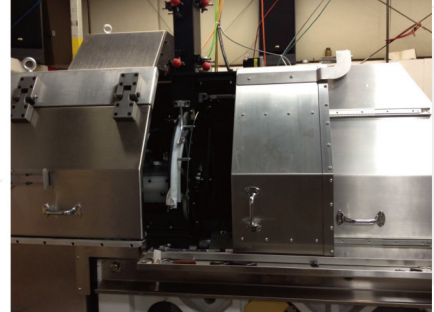
- ◆ **Drop In OKL Tool Cradle:** The coolant manifold lid allows for elimination of hoses and improved can quality. The floating tool pack allows for easy change of modules and can reduction.
- ◆ **Stainless Steel Guard Package:** Allows for easy access to key components in your bodymaker.
- ◆ **Servo Cup Feed:** Eliminates all PTO shaft and gear box requirements. Allows for electronic timing of cup in feed at high speeds.
- ◆ **Redraw Idler–Convenience:** 50% Lighter for easier, safe installation. Reduces inertia for smoother operation at increased speeds. Accepts High–Speed lubrication packages. Pinch Bolt Access from top for easier access.
- ◆ **Shortest Reach for Access to Tooling:** Flexible tool pack configuration (optimized for specific products). Optimized stroke based on customer requirements. Familiar design with significant improvements. Reduces ergonomic issues related to lifting objects away from the body.
- ◆ **Ability to Quickly Change Can Size,** includes Quick–change conveyor diameter adjustments. Quick–change conveyor height adjustments. External lubrication for conveyor.



Tool Housing/Tool Pack



The Green Machine



Easy Access

- ◆ The Green Machine: The use of composite-bearing materials allows a significant reduction in oil usage with up to a 60% savings. Employing an airbag reduces air and oil consumption associated with the constant loss air cylinder. Removal of high-pressure pump stations reduces power consumption. The new frame has access panels which are o-ring sealed and guarded. The frame also includes large and conveniently located service points to accommodate routine maintenance and set-up procedures. OKL's guard package is CE approved.
- ◆ Other features include: Optical encoder electronic timing. Machine lubrication, injector and/or Trabon. Tool housing, top-loading (choose from fixed, floating or adjustable). Clutch/brake (choose from disk or drum). Air strip (choose from electronic or rotary mechanical). Floor mounting, Isolator assemblies.

OKL Bodymaker

- ◆ Width 1.96 m
- ◆ Height 2.44 m
- ◆ Length 4.45 m
- ◆ Weight 10433 kg
- ◆ Air Supply 6 bar (90PSI), 2.34m³/min (83 ft³ a min)
- ◆ Coolant Supply 75.7 L/min(20gpm) @50psi
- ◆ Drive Motor 45 kw
- ◆ Electrical Power 208-230/460 V, 140/70.2 A, 3-PHASE, 50-60 Hz
- ◆ Can Diameters 200, 204, 211 to name but a few
- ◆ Can Volume 500 ml (211) MAX
- ◆ Speed up to 380 CPM dependent on can size
- ◆ Electronic control system: AB, Siemens or Omron PLC Control